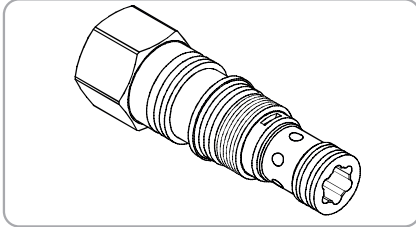
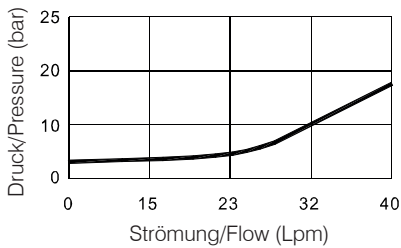


**WWck Serie Kartusche Pilotbetriebene Rückschlagventil/
WWck Serie Cartridge Pilot Operated Check Valves**

WWCK- 01 Serie/Series



Leistung/Performance



Spezifikationen/Specifications

| Model Nr./Model Number | Max Druck/Max. Pressure (bar) | Pilotverhaeltnis/Pilot Ratio | Max.Ström./Max. Flow (lpm) | Gewicht/Weight (Kg) |
|--|-------------------------------|------------------------------|----------------------------|---------------------|
| WWCK-01 | 350 (5076 psi) | 3:1 / 4:1 | 30(7.92 gpm) | 0.13(0.29 lbs) |
| Flüssigkeitstyp/Fluid Type | | ISO VG 32, 46, 68 | | |
| Viskosität cSt/Viscosity cSt | | 10~400 (59~1854 SSU) | | |
| Betriebstemperatur/Operating Temperature | | -15~70 (-5~158°F) | | |
| Verschmutzungsgrad/Contamination Level | | ISO4406.21/19/16 NAS1638,10 | | |

Wie man bestellt/How To Order

1
2
3
4
WWCK 01 - 3A - 20

1 Ventil-Serie/Valve Series

WCK=Pilot betrieben rückschlagventil kartusche
Cartridge Pilot Operated
Check Valves

4 Vorspannfeder/Bias Spring

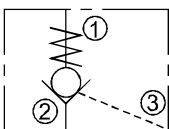
20 : 2 bar(29psi)
35 : 3.5 bar(51psi)

**2 Größe der Montageplatte : 01: T-163A Hohlraum: CST-163A
Subplate Mounting Size 01 :T-163A Cavity :CST-163A**

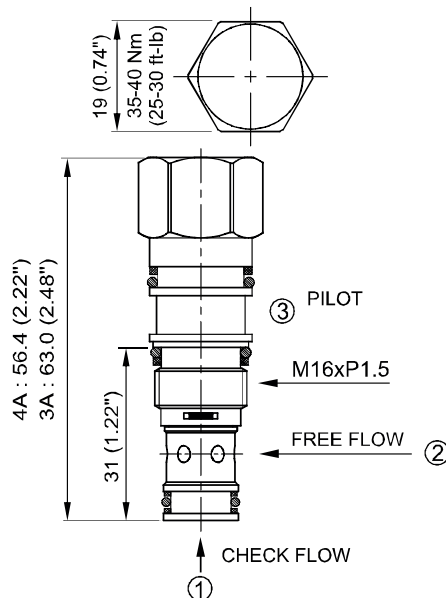
3 Pilotenverhältnis/Pilot Ratio

3A : 3 : 1
4A : 4 : 1

Steuerport (S)/Control Port (S)

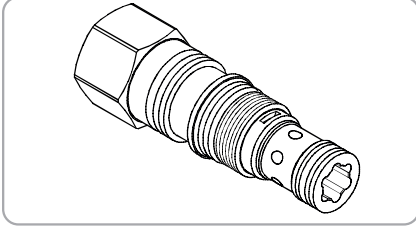


Maße/Dimensions

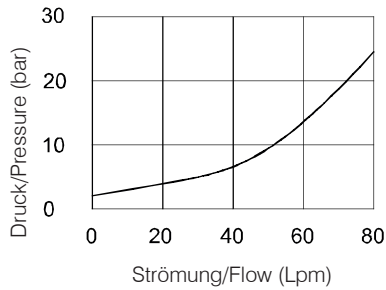


**WWck Serie Kartusche Pilotbetriebene Rückschlagventil/
WWck Serie Cartridge Pilot Operated Check Valves**

WWCK- 02 Serie/Series



Leistung/Performance



Spezifikationen/Specifications

| Model Nr./Model Number | Max Druck/Max. Pressure (bar) | Pilotverhältnis/Pilot Ratio | Max.Ström./Max. Flow (lpm) | Gewicht/Weight (Kg) |
|--|-------------------------------|-----------------------------|----------------------------|---------------------|
| WWCK-02 | 350 (5076 psi) | 3:1 / 5:1 | 60(15.85 gpm) | 0.13(0.29 lbs) |
| Flüssigkeitstyp/Fluid Type | | ISO VG 32, 46, 68 | | |
| Viskosität cSt/Viscosity cSt | | 10~400 (59~1854 SSU) | | |
| Betriebstemperatur/Operating Temperature | | -15~70 (-5~158°F) | | |
| Verschmutzungsgrad/Contamination Level | | ISO4406.21/19/16 NAS1638,10 | | |

Wie man bestellt/How To Order

| | | |
|-------------|-----------|-------------|
| 1 | 2 | 3 |
| WWCK | 02 | - 3A |

1 Ventil-Serie/Valve Series

WWCK=Pilot betrieben rückschlagventil kartusche
Cartridge Pilot Operated
Check Valves

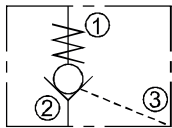
2 Größe der Montageplatte : 02 :T-11A Cavity :CST-11A

Subplate Mounting Size 02 :T-11A Cavity :CST-11A

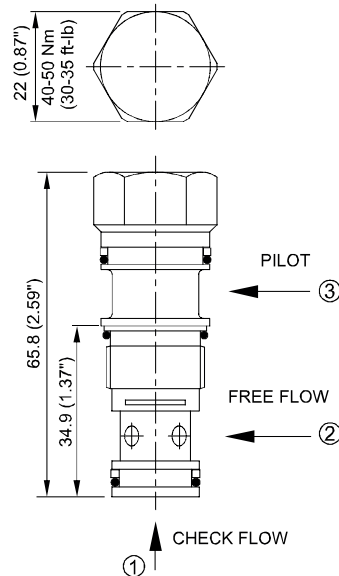
3 Pilotenverhältnis/Pilot Ratio

3A : 3:1
5A : 5:1

Steuerport (S)/Control Port (S)

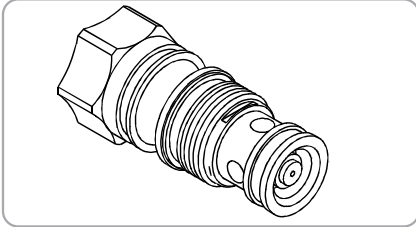


Maße/Dimensions

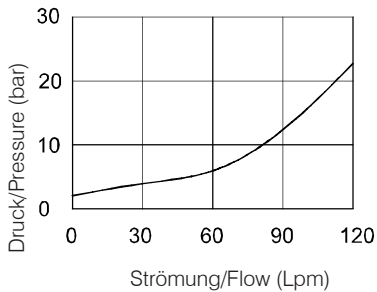


**WWck Serie Kartusche Pilotbetriebe Rückschlagventil/
WWck Serie Cartridge Pilot Operated Check Valves**

WWCK- 03 Serie/Series



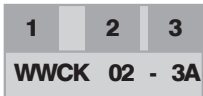
Leistung/Performance



Spezifikationen/Specifications

| Model Nr./Model Number | Max Druck/Max. Pressure (bar) | Pilotverhaeltnis/Pilot Ratio | Max.Ström./Max. Flow (lpm) | Gewicht/Weight (Kg) |
|--|-------------------------------|------------------------------|----------------------------|---------------------|
| WWCK-03 | 350 (5076 psi) | 3:1 | 120(31.7 gpm) | 0.23(0.51 lbs) |
| Flüssigkeitstyp/Fluid Type | | ISO VG 32, 46, 68 | | |
| Viskosität cSt/Viscosity cSt | | 10~400 (59~1854 SSU) | | |
| Betriebstemperatur/Operating Temperature | | -15~70 (-5~158°F) | | |
| Verschmutzungsgrad/Contamination Level | | ISO4406.21/19/16 NAS1638, 10 | | |

Wie man bestellt/How To Order



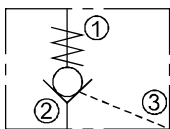
1 Ventil-Serie/Valve Series

WCK=Pilot betrieben rückschlagventil kartusche
Cartridge Pilot Operated
Check Valves

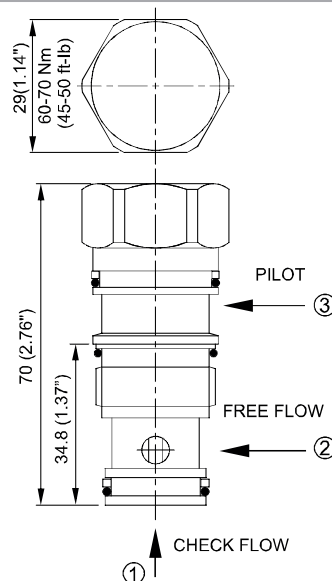
2 Größe der Montageplatte : 03 :T-2A Cavity :CST - A

Subplate Mounting Size 03 :T-2A Cavity :CST - A

Steuerport (S)/Control Port (S)

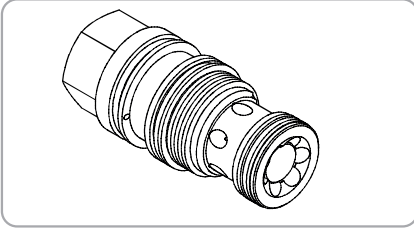


Maße/Dimensions

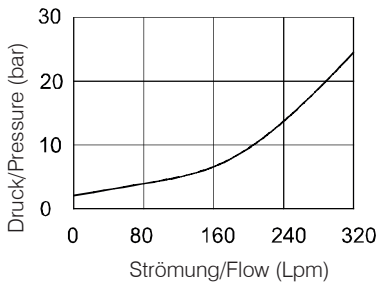


**WWck Serie Kartusche Pilotbetriebene Rückschlagventil/
WWck Serie Cartridge Pilot Operated Check Valves**

WWCK- 06 Serie/Series



Leistung/Performance



Spezifikationen/Specifications

| Model Nr./Model Number | Max Druck/Max. Pressure (bar/psi) | Pilotverhältnis/Pilot Ratio | Max.Ström./Max. Flow (lpm/gpm) | Gewicht/Weight (Kg) |
|--|-----------------------------------|-----------------------------|--------------------------------|---------------------|
| WWCK-06 | 350 (5076 psi) | 3:1 | 200(52.83 gpm) | 0.53(1.18 lbs) |
| Flüssigkeitstyp/Fluid Type | | ISO VG 32, 46, 68 | | |
| Viskosität cSt/Viscosity cSt | | 10~400 (59~1854 SSU) | | |
| Betriebstemperatur/Operating Temperature | | -15~70 (-5~158°F) | | |
| Verschmutzungsgrad/Contamination Level | | ISO4406.21/19/16 NAS1638,10 | | |

Wie man bestellt/How To Order



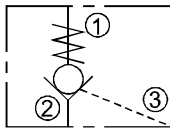
1 Ventil-Serie/Valve Series

WWCK=Pilot betrieben rückschlagventil kartusche
Cartridge Pilot Operated
Check Valves

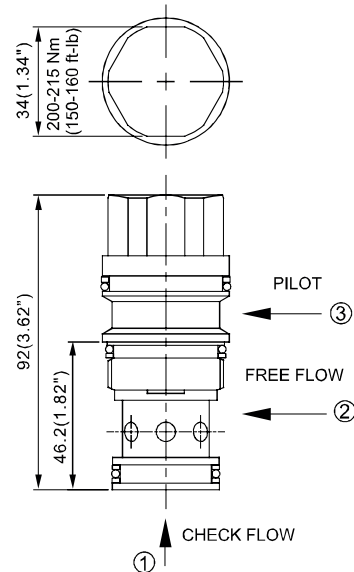
2 Porting

06 :T-17A Cavity :CST-17A

Steuerport (S)/Control Port (S)

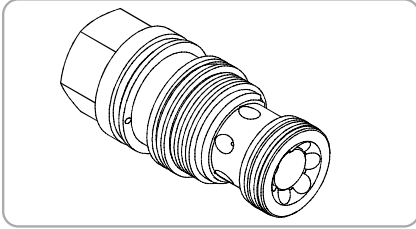


Maße/Dimensions

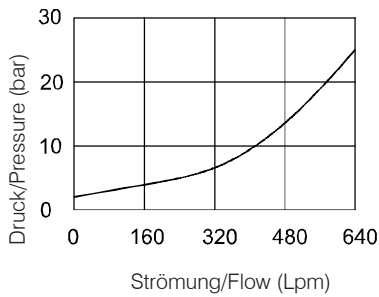


**WWck Serie Kartusche Pilotbetriebene Rückschlagventil/
WWck Serie Cartridge Pilot Operated Check Valves**

WWCK- 10 Serie/Series



Leistung/Performance



Spezifikationen/Specifications

| Model Nr./Model Number | Max Druck/Max. Pressure (bar) | Pilotverhältnis/Pilot Ratio | Max.Ström./Max. Flow (lpm) | Gewicht/Weight (Kg) |
|--|-------------------------------|-----------------------------|----------------------------|---------------------|
| WWCK-10 | 350 (5076 psi) | 3:1 | 460(15.85 gpm) | 0.18(2.61 lbs) |
| Flüssigkeitstyp/Fluid Type | | ISO VG 32, 46, 68 | | |
| Viskosität cSt/Viscosity cSt | | 10~400 (59~1854 SSU) | | |
| Betriebstemperatur/Operating Temperature | | -15~70 (-5~158°F) | | |
| Verschmutzungsgrad/Contamination Level | | ISO4406.21/19/16 NAS1638,10 | | |

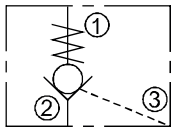
Wie man bestellt/How To Order

1 2
WWCK 10

1 Ventil-Serie/Valve Series
WWCK=Pilot betrieben rückschlagventil kartusche
Cartridge Pilot Operated
Check Valves

2 Größe der Montageplatte : 10 :T-19A Cavity :CST-19A
Subplate Mounting Size 10 :T-19A Cavity :CST-19A

Steuerport (S)/Control Port (S)



Maße/Dimensions

